

# January 2015 Heavy Rail Performance

## Wait Time Performance

**83%**      Red      84%  
                  Orange      78%  
                  Blue      91%

Passengers with on-time waits  
 Goal: 90%\*

### Number of Days Achieving Goal



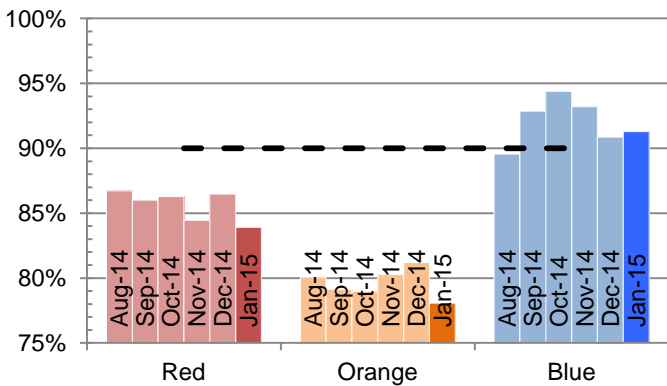
## Travel Time Performance

**90%**      Red      91%  
                  Orange      85%  
                  Blue      96%

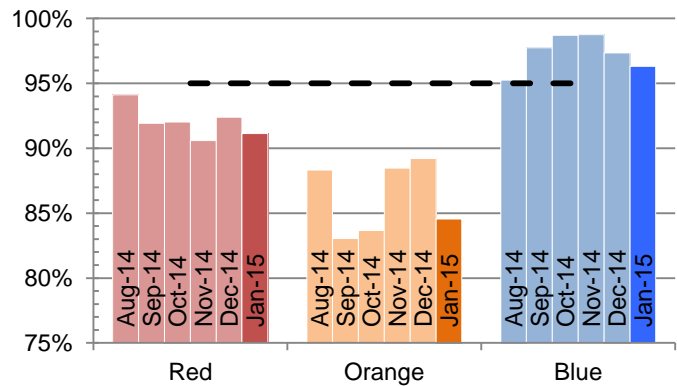
Passengers delayed less than 3 minutes  
 Goal: 95%\*



## Performance Over the Last 6 months



On-Time Passenger Waits



Undelayed Passenger Trips

\*Goals are preliminary and subject to change  
 Calculations exclude weekend diversions

